

# SNYDER



**Equipment, Inc.**

*Storing, Rolling, Lifting since 1947*

## PRODUCT INFORMATION

# Sandusky System Series cabinets

2946 Larimer St. Denver, CO 80205  
303-295-1100 / 800-373-7693  
FAX 303-295-2464  
Email [info@snyderequipment.com](mailto:info@snyderequipment.com)  
[www.snyderequipment.com](http://www.snyderequipment.com)

# SYSTEM SERIES EMBOSSED TEXTURED FINISH



A



B

## Single Door Wardrobe (A) with file drawer

Embossed textured finish. Full recessed pull with cam locks. One adjustable shelf with wardrobe bar. Full suspension file drawer.

## Single Door Storage (B) with file drawer

Embossed textured finish. Full recessed pull with cam locks. Three adjustable shelves. Full suspension file drawer.

Item No.

Size

HAWF 171864-00

(17" w x 18" d x 64" h)

HADF 171864-00

(17" w x 18" d x 64" h)

## Storage Cabinet (C) with file drawer

Embossed textured finish. Full recessed pull with cam locks. Two adjustable shelves and one center fixed shelf, plus bottom shelf. Full suspension file drawer.

## Counter Height Storage (D) with file drawer

Embossed textured finish. Full recessed pull with cam locks. One fixed shelf plus bottom shelf. Full suspension file drawer.

## Double Door Storage (E) with adjustable shelves

Embossed textured finish. Full recessed pull with cam locks. Two adjustable shelves and one center fixed shelf, plus bottom shelf.

## Counter Height Storage (F) with fixed shelves

Embossed textured finish. Full recessed pull with cam locks. Two fixed shelves plus bottom shelf.

HADF 301864-00

(30" w x 18" d x 64" h)

HFDF 301842-00

(30" w x 18" d x 42" h)

HA3F 301864-00

(30" w x 18" d x 64" h)

HA3F 361864-00

(36" w x 18" d x 64" h)

HF2F 301842-00

(30" w x 18" d x 42" h)

Last two digits of stock number designate color.  
Replace "00" with appropriate number.  
See page 23 for color options.

www.sanduskylee.com



# SYSTEM SERIES FEATURES

- Strength, appearance and durability. Heavy gauge steel (22 gauge) in an attractive embossed textured finish complements any environment and provides years of long-term usage.
- Steel ball bearing full suspension drawer tracks ensure smooth operation. File drawers accommodate letter or legal hanging file folders. Full recessed drawer and door pulls are both stylish and convenient to use. The doors and drawers are secured with a cam lock.

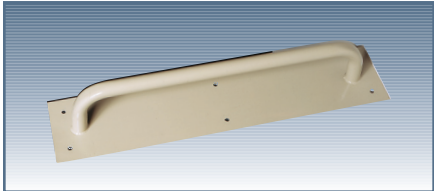


## OPTIONAL ACCESSORIES

### Side Handle For Transports mobile cabinet side handle (optional)

Permits you to move your Transport Series Cabinet easily. Attaches to either side of a 24" deep cabinet to mount horizontally or attaches to 18" deep cabinet to mount vertically using bolts/nuts provided. Additional backer support plate attaches to the inside for maximum support. Holes must be drilled in cabinet to attach handle. Durable finish. Order to match your cabinet color.

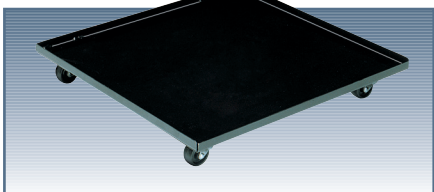
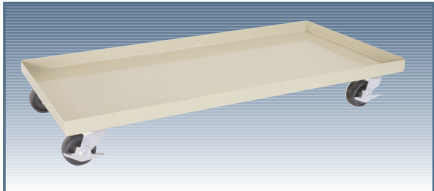
Item No.	Size
TSH-00	23" w x 5" h x 4 1/2" d



### Cabinet Dolly make your cabinet mobile

Heavy duty, 13 gauge welded steel with four swivel casters, two with brakes. Weight capacity 1000 lbs. Accommodates 36" w x 18" d or 36" w x 24" d (or smaller) cabinets. Fits Valueline, Classic Plus and Elite Models. (\*) Putty finish only.

DOIO 361800-07 PY	(36" w x 18" d cabinets)
DOIO 361800-09 BK	(36" w x 18" d cabinets)
DOIO 362400-07 PY*	(36" w x 24" d cabinets)



### Chair Dolly

Supports 280 pounds. has four 2" swivel casters. Finished in black.

DOIO 2323CH-09	(22 1/2" w x 22 1/2" d x 3/4" h)
----------------	----------------------------------

### Wire Dividers

Snap firmly into underside of each adjustable shelf. 12 dividers per box. Gray plated steel. Will fit in 18" deep storage cabinets and bookcases.

BWD18	Fits 18" Deep Units
-------	---------------------



### Portable Bin

Convenient Front and Back Easy Grip Handles. Label holder for indentifying contents. Corner clips provided for stackable compact storage. Heavy-Duty, holds 100 lbs, Powder coated. Black and Putty Finish.

CB 121311-07 PY	(12" w x 13" d x 11 1/2" H)
CB 121311-09 BK	(12" w x 13" d x 11 1/2" H)

